

# LIPOSUNIC- HIFU

Body contouring & Slimming system

## ● Application

- Body slimming, body shaping.
- To promote and accelerate the body's metabolism.

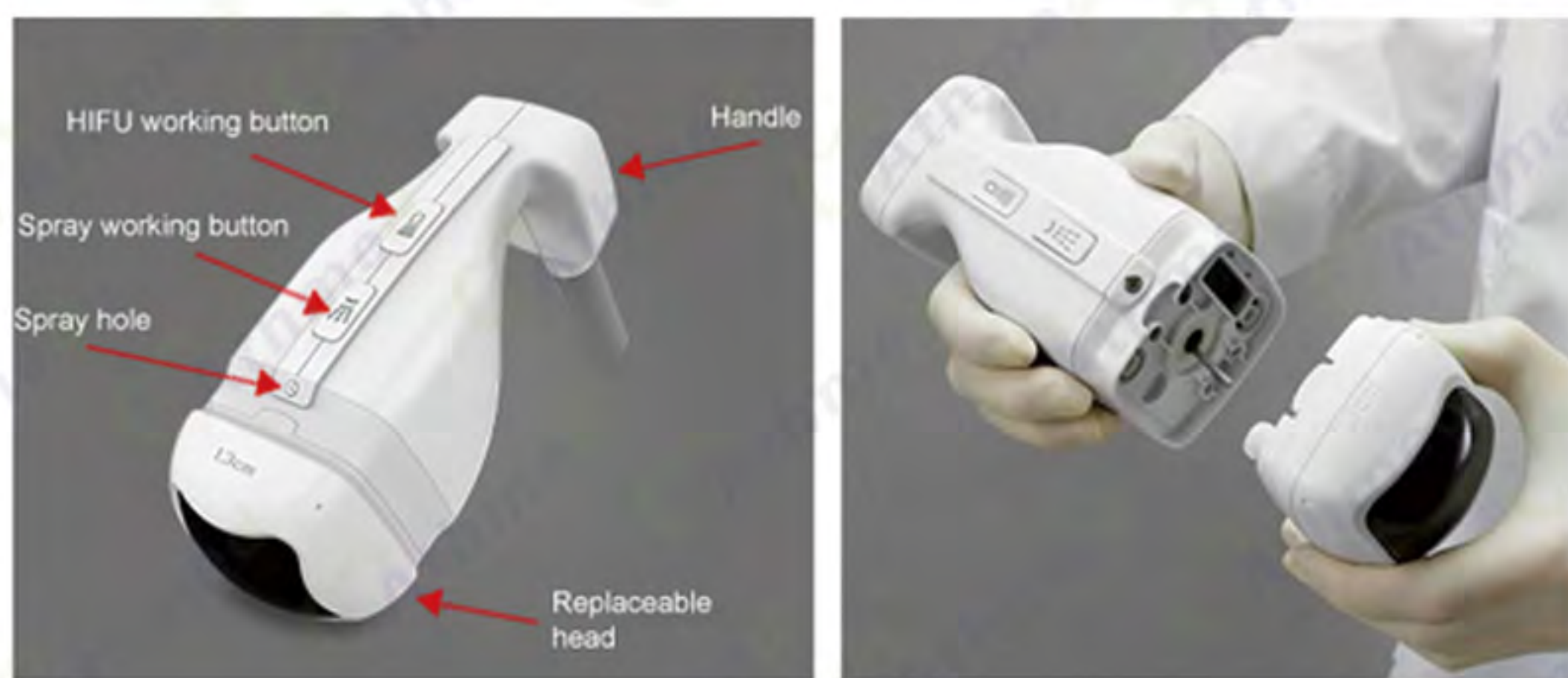
## ● Advantage

- Non-invasive and non-surgical fat reduction, Energy only act on the derma layers, keep the surface skin totally intact.
- Optimal results, permanently destroy subcutaneous fat, never rebound.
- Intelligenet system for scanning, focus subcutaneous fat under 1.3cm. not any harm to other layer tissue.
- Minimal recovery time, have no effect on customs daily life.
- Two treatment head 13mm and 8mm as standard configuration. five different depth of treatment heads for choose: 1.3m, 4mm, 6mm, 8mm, 13mm.



AM-Lp

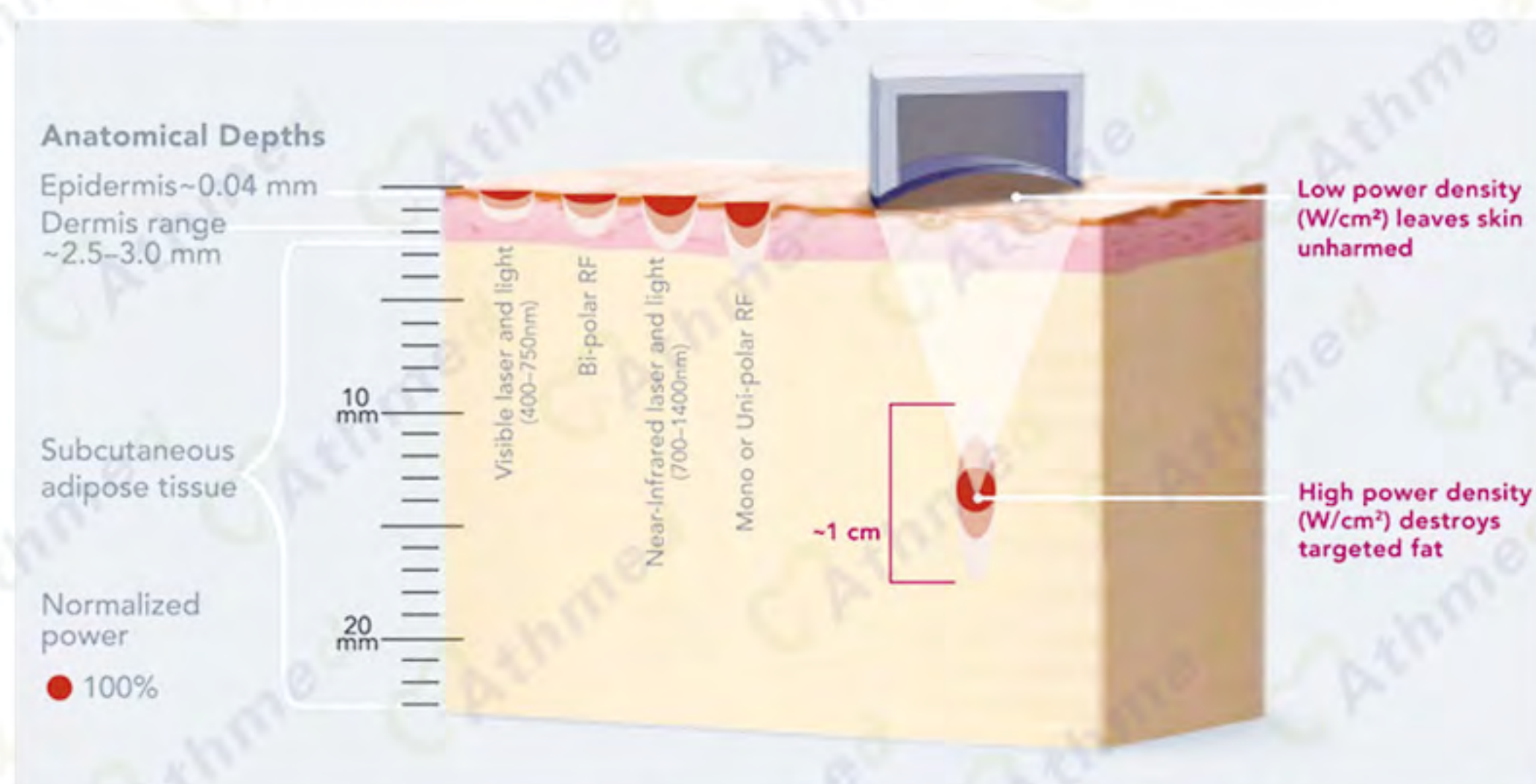




## ● Technical Specification

Name: Liposonic  
 Focal Depth: 1.3CM 0.8CM  
 Single output focus point: 576  
 Probe: 500 shots  
 Input power: Less than 580VA  
 LCD screen: 10.4 inch TFT touch screen  
 Frequency: 230Khz+20Khz  
 Energy regulation: 30 stalls to 45 stalls  
 Step length: 5 files  
 Dimension: 65\*71\*124cm  
 Beauty Equipment Weight: 35KG  
 Beauty Equipment Voltage:  
 AC 100V-120V/200V-240V/50Hz/60Hz

## ● Working Principle



High Intensity Focused Ultrasound penetrates focused and volumetric ultrasonic energy at precise depth (1.3 cm) in subcutaneous fat layers targeting fat tissue causing a non-thermaleffect. The surrounding structures such as the epidermis, blood vessels and nerves will not be damaged. Meanwhile the metabolized contents (triglyceride, fatty acid) of cells will excrete outside body automatically through blood circulation and lymphatic drainage without harm to the human body.

## ● Before and after

